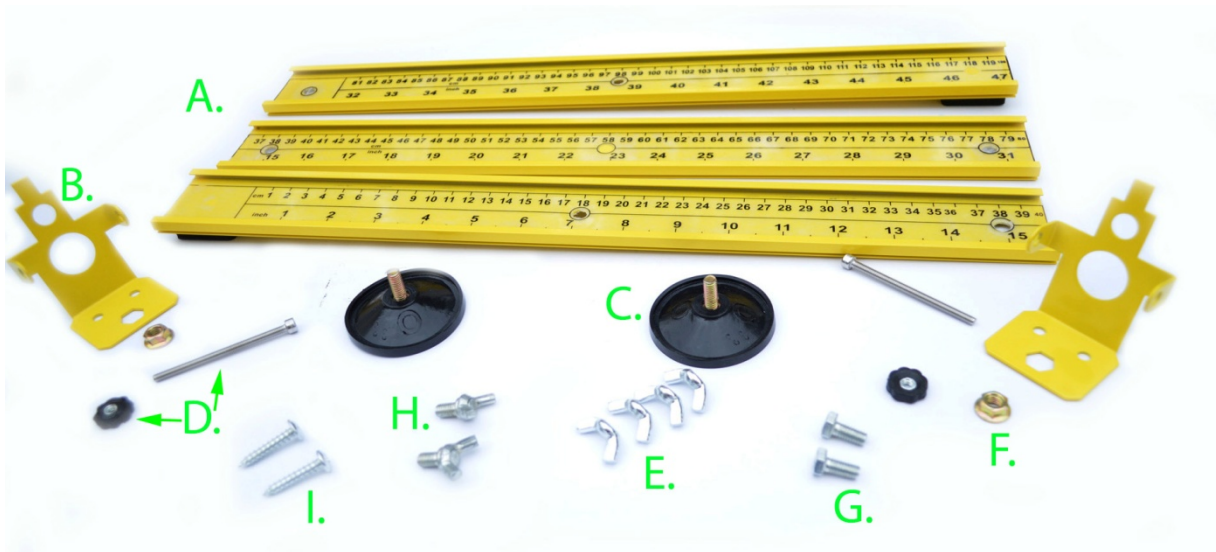


Included parts:

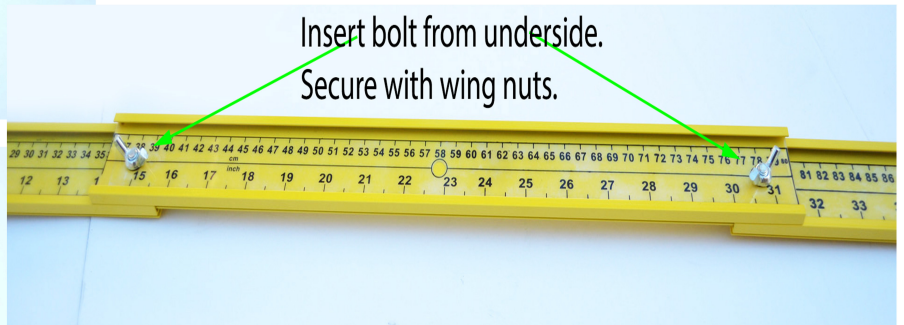
- |                                      |   |
|--------------------------------------|---|
| 3 - 15" Track (A)                    | 2 - Nuts (F)  |
| 2 - Clasp Towers (B)                 | 2 - Bolts (G)   |
| 2 - Suction Cups (C)                 | 2 - Wing Bolt (H)                                     |
| 2 - Horizontal Rod w/plastic nut (D) | 2 - Wood Screws (I) (Optional for permanent mounting) |
| 4 - Wing Nuts (E)                    |   |



## Assembling Track



Connect the tracks by inserting the 1" - 15" section into the bottom guides of the 15"-31" section. Insert the 32" - 47" section into the bottom guides of the 15" - 31" section from the right side. Align the holes that are cut into the three sections at the 15" and 31" marks.



Insert bolt from underside.  
Secure with wing nuts.

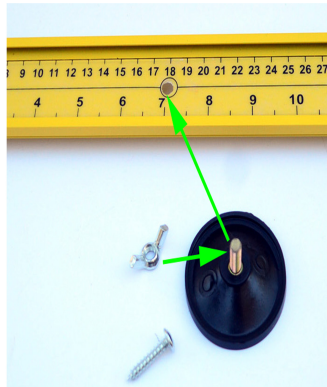


Insert a bolt(G) from the underside of the tracks through each hole. Secure using a wing nut (E).

Moisten the underside of suction cups(C) and place a suction cup under the 7" hole and another under the 38" hole.

Screw a wing nut(E) a couple of turns onto each of the suction cups threaded bolt. Do not tighten.

Place the jig on a flat surface where you would like to work. Press firmly on each wing nut to secure the jig to the surface.



Tighten the wing nuts but do not overtighten.

**Use the optional screws for permanent mounting to a work bench.**

## Attaching Towers to track.



#1. Insert nut (F) underneath tower.



#2. Hold the nut in place while sliding the tower into the track.



#3 Insert wing bolt(H) into nut.



4. Slide the tower to obtain the desired length for your project. Tighten the wing bolt to lock the tower. Do not over tighten.

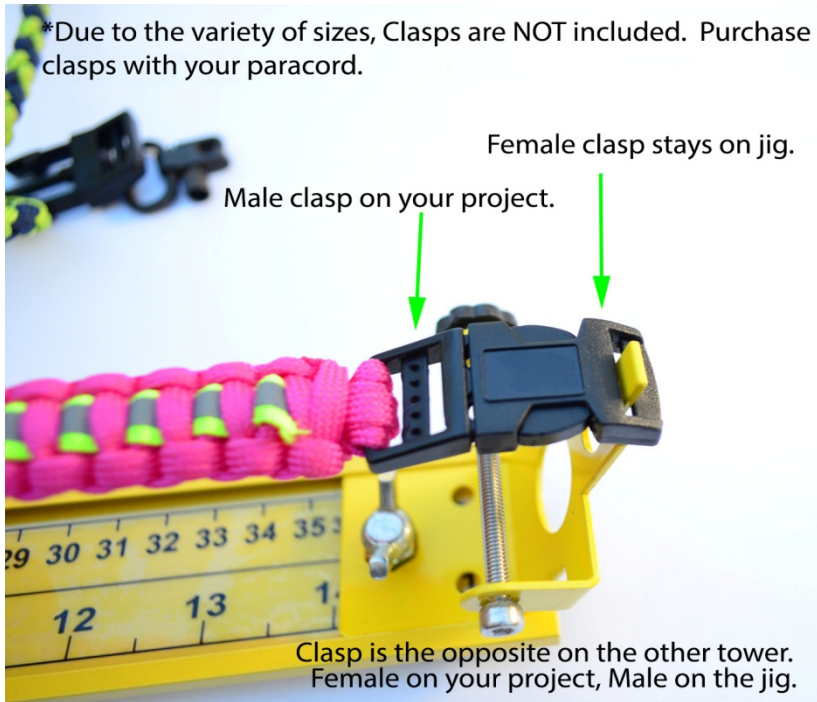
5. Repeat for opposite tower.

## Assembled Jig ready to use.

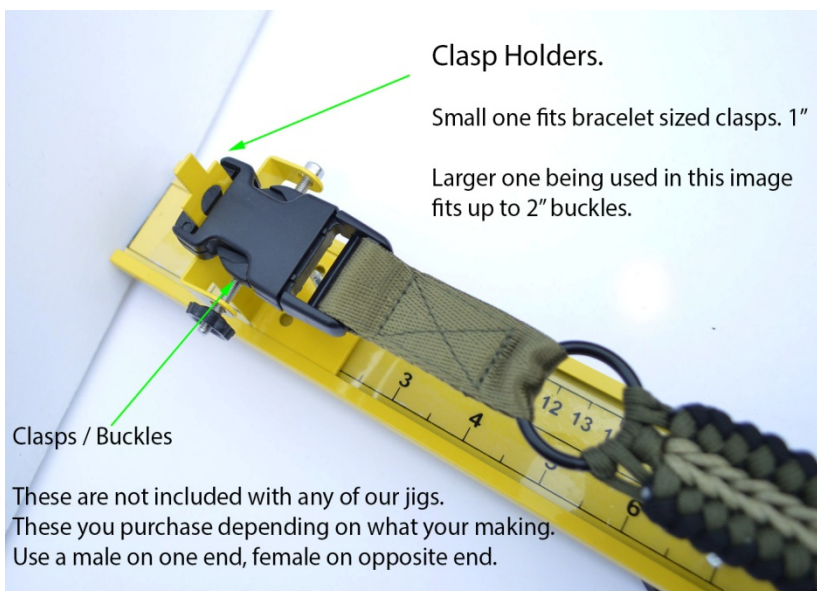


## Clasps / Buckles

\*Due to the variety of sizes, Clasps are NOT included. Purchase clasps with your paracord.



Clasp is the opposite on the other tower.  
Female on your project, Male on the jig.



Clasp Holders.

Small one fits bracelet sized clasps. 1"

Larger one being used in this image fits up to 2" buckles.

Clasps / Buckles

These are not included with any of our jigs.  
These you purchase depending on what your making.  
Use a male on one end, female on opposite end.



Acid Tactical LLC  
Inman, SC 29349